

LCP Proximal Tibial Plate 4.5/5.0.

Extensive support

Stable triangular construction

Anatomical design

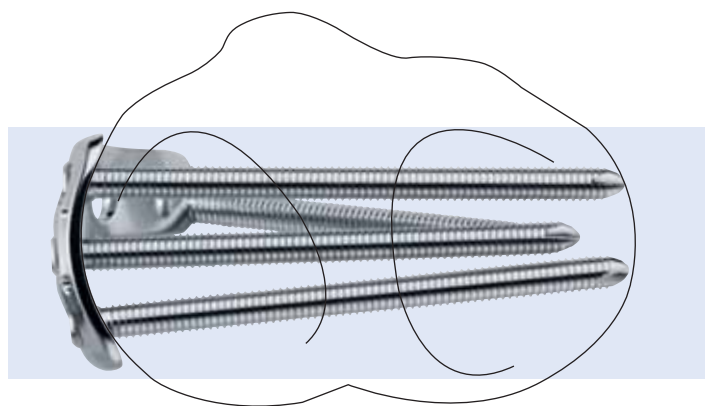


LCP
Locking
Compression
Plate

LCP Proximal Tibial Plate 4.5/5.0.

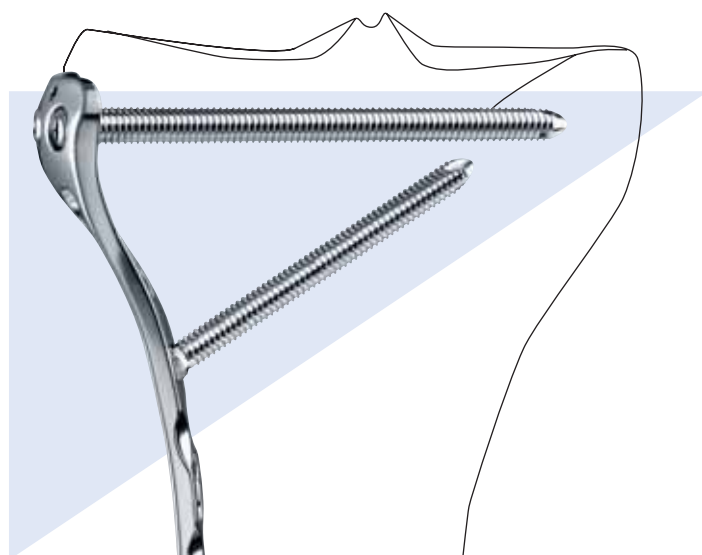
Extensive support

- Locking screws with angular stability in the head area for secure support, even in osteoporotic bone
- Optimal reconstruction of the tibial plateau for restoration of full joint function



Stable triangular construction

- One locking hole for an upwardly-pointing, diagonal locking screw \varnothing 5.0 mm enables to form a stable triangular construction



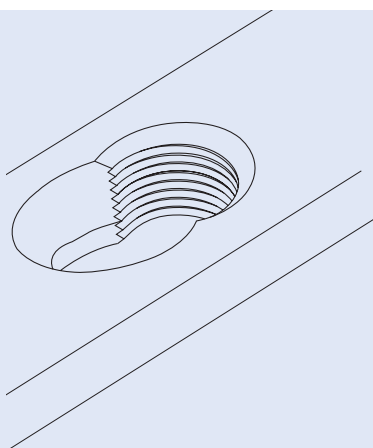
LCP Locking Compression Plate

Angular stable support of fragments regardless of bone quality

Reduced risk of primary and secondary loss of reduction even under high dynamic loading

Reduced impairment of periosteal blood supply due to limited plate-periosteum contact

Good purchase also in osteoporotic bone and in multiple fragment fractures



LCP combi-hole

Intraoperative choice between compression and locking with angular stability

With standard screws: interfragmentary or dynamic-axial compression

With locking screws: stable plate-screw connection without loss of reduction regardless of plate modeling

Anatomical design

- Anatomically contoured plate avoids the need for bending
- The contouring of the proximal end of the plate is designed to match the lateral condyle

A Two holes for Kirschner wires facilitate the fixation of fracture fragments close to the joint and an accurate positioning of the plate

B Three locking holes in the proximal contouring of the head of the plate for locking screws \varnothing 5.0 mm

C Two round holes below the plate head for cortical screws \varnothing 4.5 mm and for cancellous bone screws \varnothing 6.5 mm. This extra option allows additional fragments to be fixed and compressed as required

D Locking hole with an upwardly-pointing, diagonal-lateral locking screw \varnothing 5.0 mm



LCP Proximal Tibial Plate 4.5/5.0.

Indications

Intra- and extra-articular, metaphyseal and epiphyseal fractures of the proximal tibia, including multifragment fractures



Ordering information

LCP Proximal Tibial Plate 4.5/5.0, lateral

Stainless Steel	Titanium	Number of shaft holes	Length (mm)	
240.036	440.036	4	82	right
240.038	440.038	6	118	right
240.040	440.040	8	154	right
240.042	440.042	10	190	right
240.044	440.044	12	226	right
240.046	440.046	14	262	right
240.037	440.037	4	82	left
240.039	440.039	6	118	left
240.041	440.041	8	154	left
240.043	440.043	10	190	left
240.045	440.045	12	226	left
240.047	440.047	14	262	left

Insert for LCP Proximal Tibial Plates 4.5/5.0, for Vario Case: 68.120.420

Compatible with LCP Large Fragment Instruments Set